

SECOND WORLDWIDE UNEP INTERLABORATORY STUDY ON POPS - PBDEs

Jacob de Boer, Helena Nilsson, Ike van der Veen, Bert van Bavel, Heidi Fiedler

Summary Sum PBDEs

Matrix	n	AV	Median	Mean	Min	Max	Between lab CV (%)	Inclusion rate (%)
Standard solution	41	1511	1586	1511	1.15	9470	31	66
Sediment	30	7.74	7.99	7.74	1.59	198	23	65
Fish	34	4.28	4.58	4.28	0.754	30	51	73
Mothers' milk	20	38.0	41.3	38.0	17.4	30140	36	73
Air extract	21	20.2	21.6	20.2	4.96	434	31	61

Summary per Region – Standard solution

Standard solution	Asia-Pacific group			WEOG			GRULAC			Africa			CEE		
	n	Betwe en lab CV (%)	Inclu- sion rate (%)	n	Betwe en lab CV (%)	Inclu- sion rate (%)	n	Betwe en lab CV (%)	Inclu- sion rate (%)	n	Betwe en lab CV (%)	Inclu- sion rate (%)	n	Betwe en lab CV (%)	Inclu- sion rate (%)
PBDE 17	12	17	60	11	21	63	1	NA	NA	1	NA	NA	1	NA	NA
PBDE 28	23	26	64	14	25	75	1	NA	NA	1	NA	NA	1	NA	NA
PBDE 47	23	22	60	15	14	58	1	NA	NA	1	NA	NA	2	NA	NA
PBDE 99	23	25	66	15	7	57	1	NA	NA	1	NA	NA	2	NA	NA
PBDE 153	23	25	62	15	22	70	1	NA	NA	1	NA	NA	1	NA	NA
PBDE 154	23	20	60	15	20	66	1	NA	NA	1	NA	NA	1	NA	NA
PBDE 183	23	46	68	13	28	67	1	NA	NA	1	NA	NA	1	NA	NA
PBDE 100	23	23	64	15	19	64	1	NA	NA	1	NA	NA	1	NA	NA
PBB 153	9	15	66	3	21	71	0	NA	NA	0	NA	NA	0	NA	NA

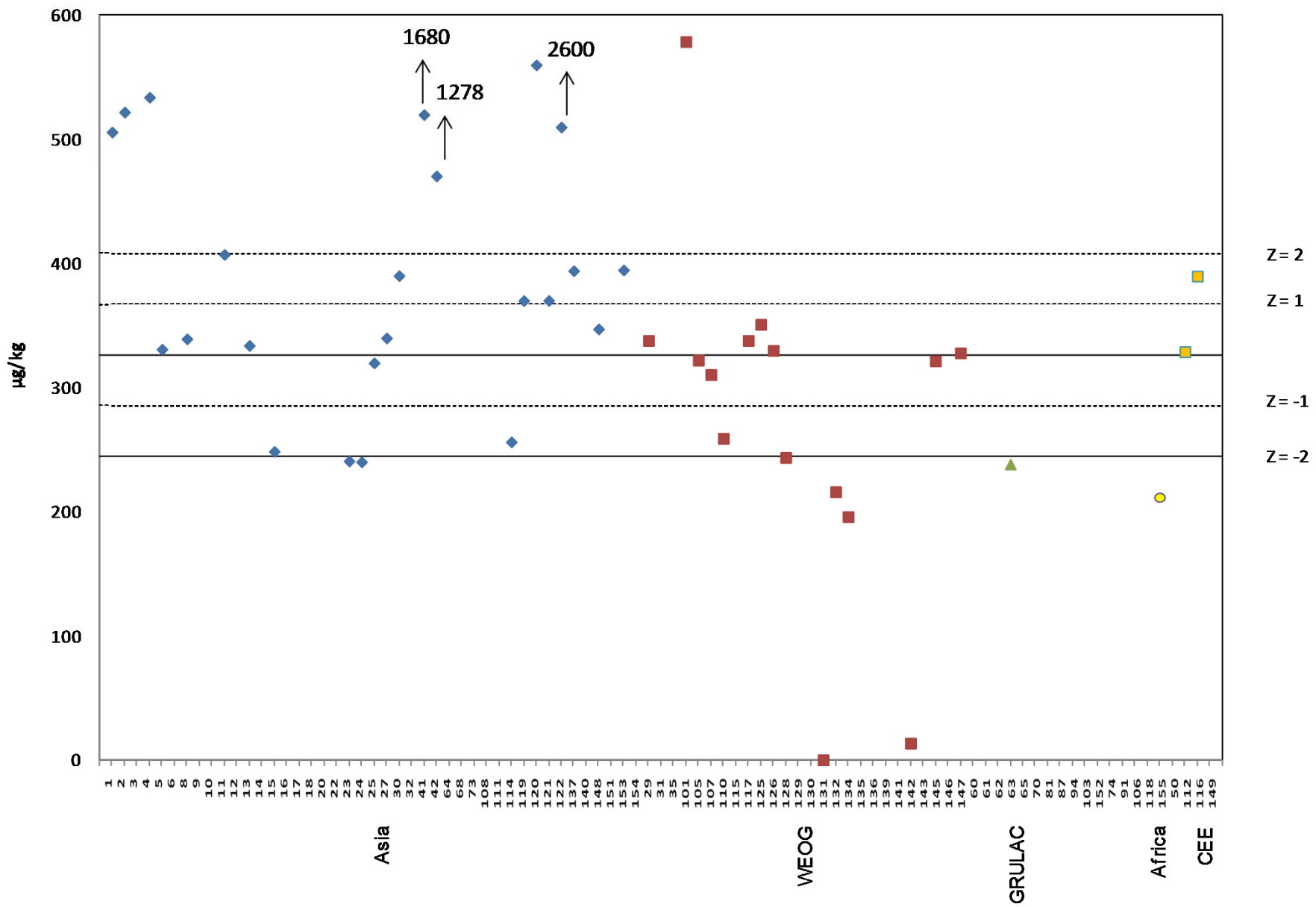
Summary per Region - Fish

Fish	Asia-Pacific group			WEOG			GRULAC			Africa			CEE		
	n	Betwe en lab CV (%)	Inclu- sion rate (%)	n	Betwe en lab CV (%)	Inclu- sion rate (%)	n	Betwe en lab CV (%)	Inclu- sion rate (%)	n	Betwe en lab CV (%)	Inclu- sion rate (%)	n	Betwe en lab CV (%)	Inclu- sion rate (%)
PBDE 17	6	60	69	8	71	77	0	NA	NA	1	NA	NA	1	NA	NA
PBDE 28	20	67	66	11	83	78	0	NA	NA	1	NA	NA	1	NA	NA
PBDE 47	20	57	74	12	37	74	0	NA	NA	1	NA	NA	1	NA	NA
PBDE 99	19	60	72	12	36	70	0	NA	NA	1	NA	NA	1	NA	NA
PBDE 153	18	60	66	12	46	73	0	NA	NA	1	NA	NA	1	NA	NA
PBDE 154	18	59	67	12	55	81	0	NA	NA	1	NA	NA	1	NA	NA
PBDE 183	12	56	65	5	32	49	0	NA	NA	1	NA	NA	0	NA	NA
PBDE 100	20	74	75	11	43	71	0	NA	NA	1	NA	NA	1	NA	NA
PBB 153	5	22	78	3	14	64	0	NA	NA	0	NA	NA	0	NA	NA

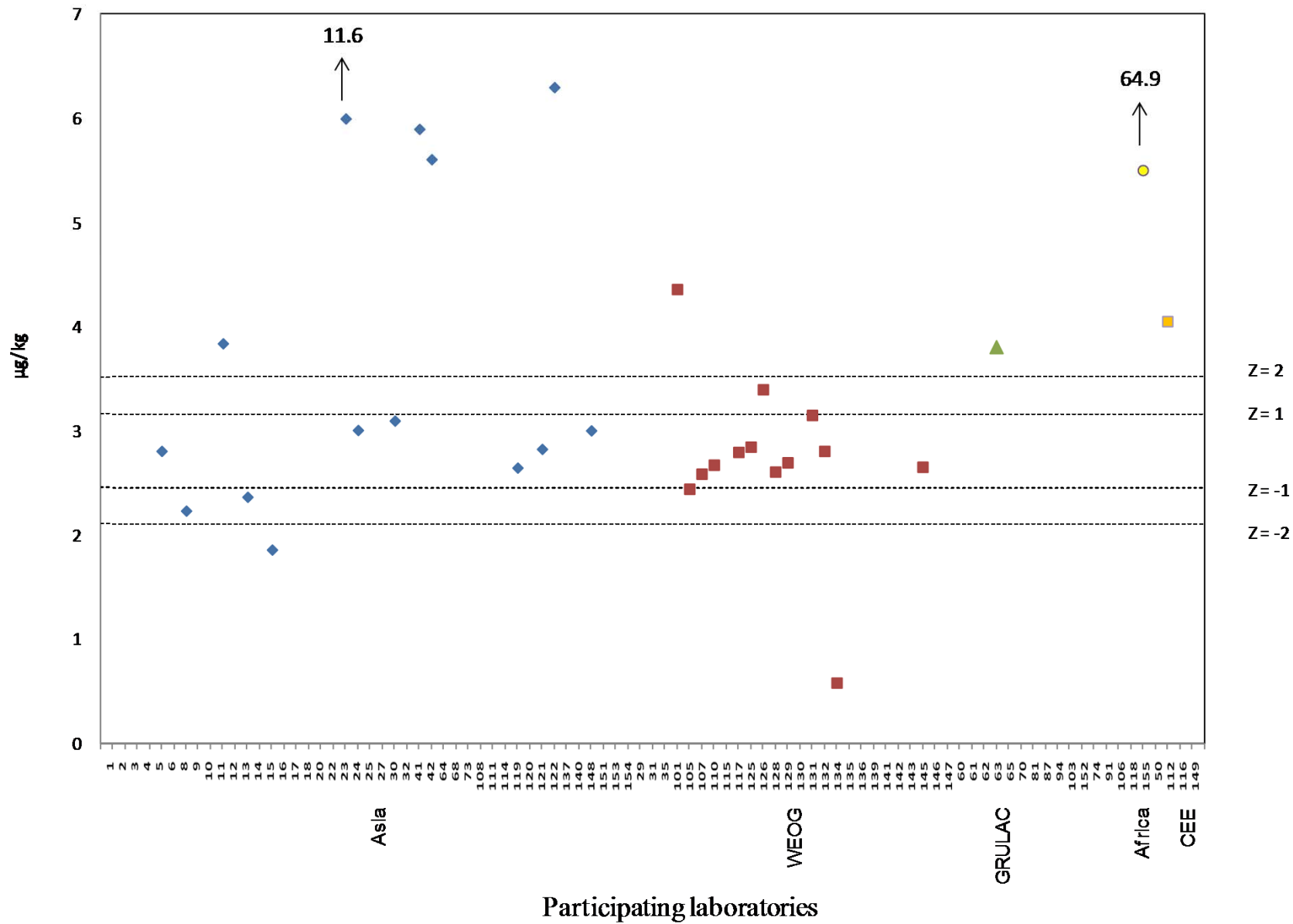
Summary per Region - sediment

Sediment	Asia-Pacific group			WEOG			GRULAC			Africa			CEE		
	n	Betwe en lab CV (%)	Inclu- sion rate (%)	n	Betwe en lab CV (%)	Inclu- sion rate (%)	n	Betwe en lab CV (%)	Inclu- sion rate (%)	n	Betwe en lab CV (%)	Inclu- sion rate (%)	n	Betwe en lab CV (%)	Inclu- sion rate (%)
PBDE 17	9	23	64	9	21	61	1	NA	NA	1	NA	NA	1	NA	NA
PBDE 28	14	22	66	13	12	60	1	NA	NA	1	NA	NA	1	NA	NA
PBDE 47	14	34	67	13	6	59	1	NA	NA	1	NA	NA	1	NA	NA
PBDE 99	14	24	67	13	15	68	0	NA	NA	1	NA	NA	1	NA	NA
PBDE 153	14	51	66	13	11	62	0	NA	NA	1	NA	NA	1	NA	NA
PBDE 154	14	52	70	13	8	66	0	NA	NA	1	NA	NA	1	NA	NA
PBDE 183	13	54	72	12	17	65	0	NA	NA	1	NA	NA	1	NA	NA
PBDE 100	14	46	68	13	13	67	0	NA	NA	1	NA	NA	1	NA	NA
PBB 153	6	38	75	2	NA	NA	0	NA	NA	0	NA	NA	0	NA	NA

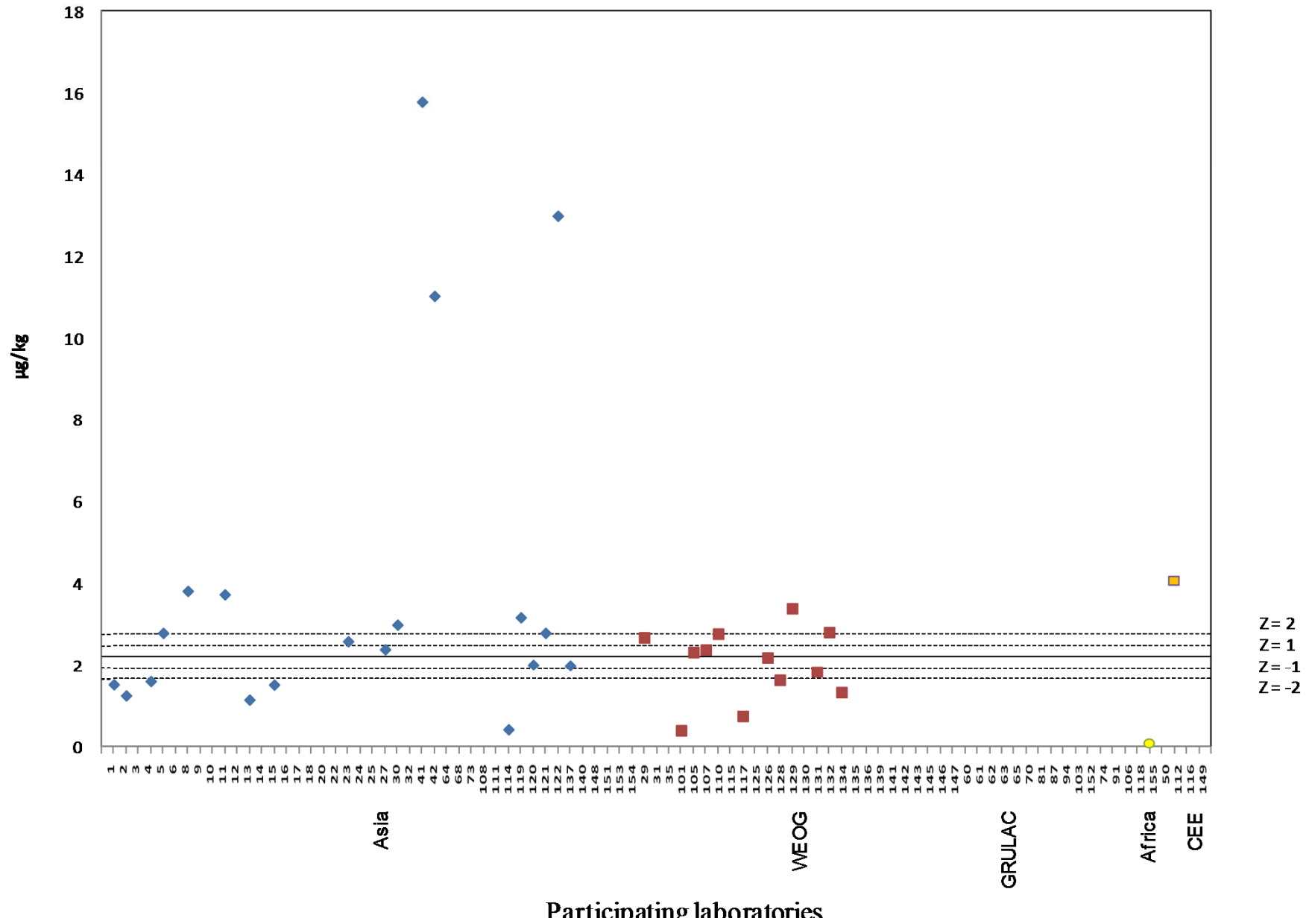
PBDE 47 in Standard Solution



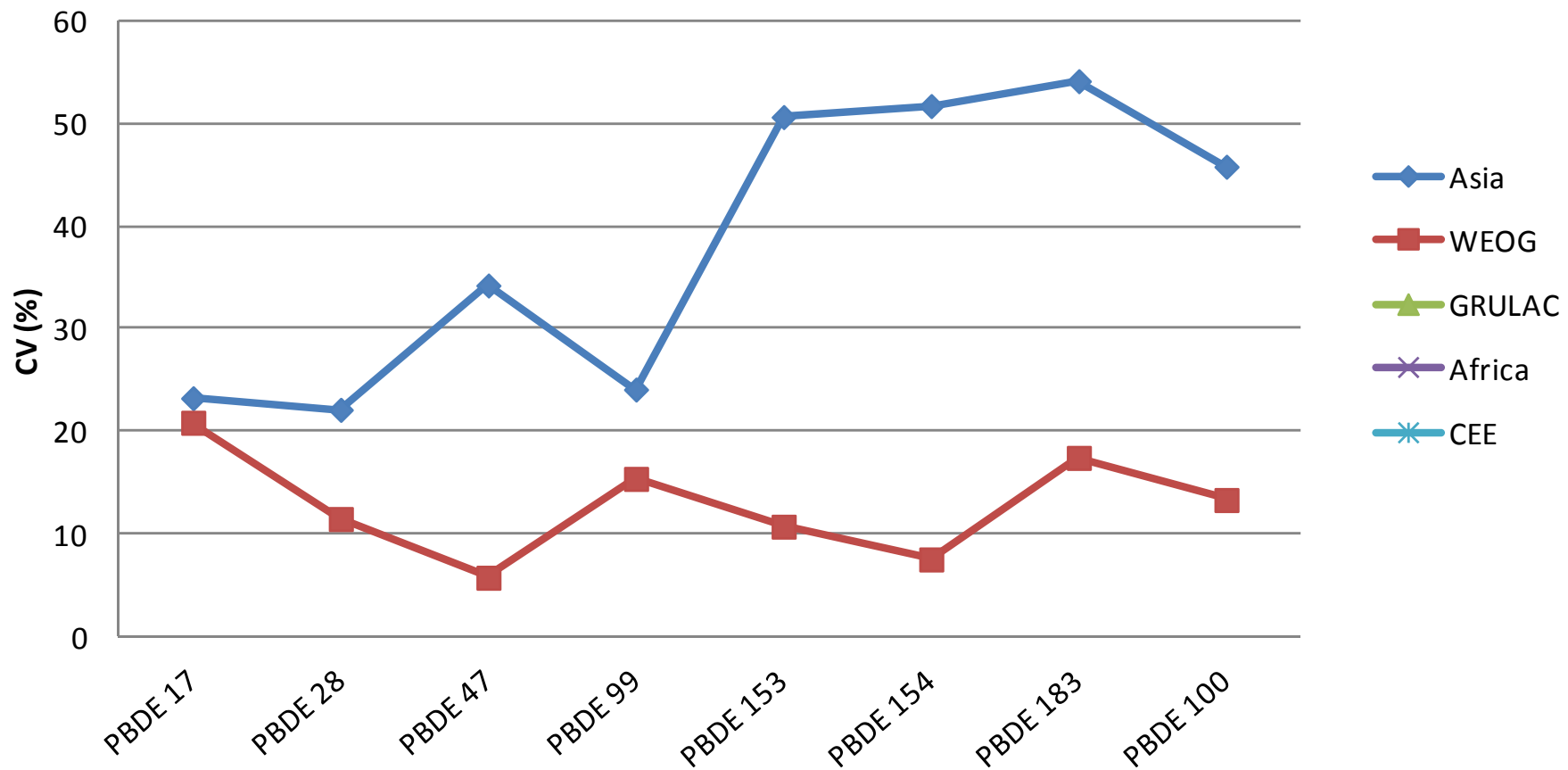
PBDE 47 in Sediment



PBDE 47 in Fish



CV values per region - PBDE in sediment sample



CV values per region - PBDE in standard solution

